

UNDERCOUNTER 6" STAND KIT - 05700-003-34-24

UNDERCOUNTER

PREPARATION



Disconnect electrical power at the breaker or disconnect switch and lockout/tagout in accordance with procedures and codes.

Ensure that incoming water to the machine is secured either by use of a shut-off valve or by disconnecting the incoming water line.

The unit must be drained completely.

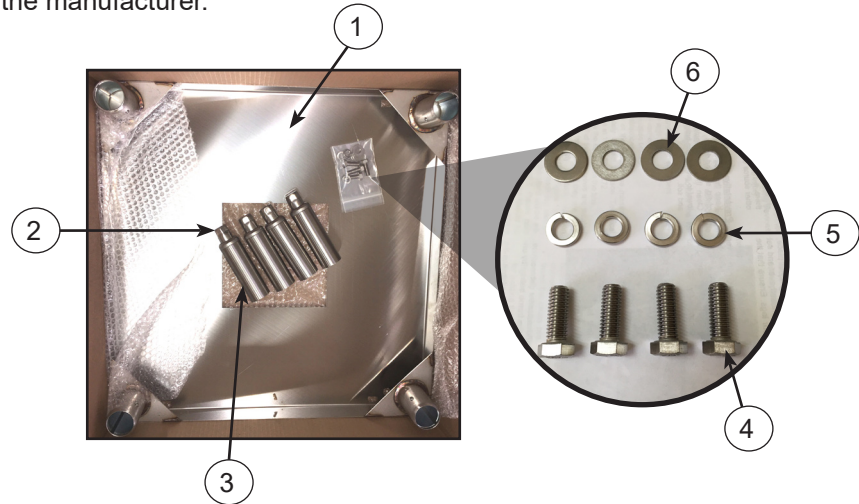
TOOLS REQUIRED

- 5/32" Allen wrench
- Tube of food-grade silicon
- Silicon gun
- 9/16" wrench
- Mop or rags

Items 2 and 3 are already assembled and are referred to as "legs" in these instructions.

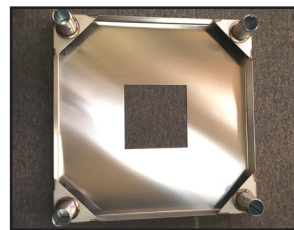
The set screws might need to be backed-out a little to allow the legs to seat fully in the sockets.

1. Inspect the stand kit and packaging to ensure there is no freight damage. If there is damage, contact the freight carrier immediately.
2. Verify that all kit components are present. If any component is missing, contact the manufacturer.

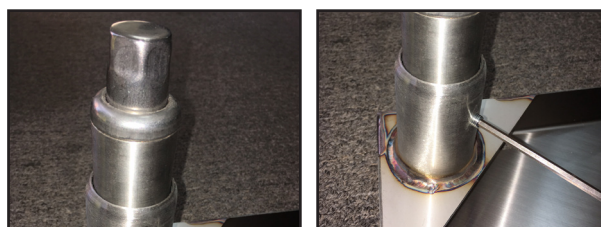


ITEM	QTY	DESCRIPTION	PART NUMBER
1	1	Stand Platform	05700-002-88-82
2	4	Foot, Adjustable	05340-108-01-03
3	4	Leg, 6" Stand	05700-021-61-10
4	4	Bolt, Hex, 3/8-16 x 1"	05305-276-03-00
5	4	Lockwasher, 3/8"	05311-276-01-00
6	4	Washer, Flat, 3/8"	05311-176-01-00

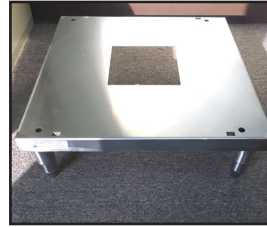
3. Lay the stand platform on its top.



4. Place the legs fully into the leg sockets of the stand platform and tighten the set screws with the Allen wrench to secure them in place.



5. Flip the stand over and set it down on all four feet. Ensure the legs are stable.



6. When stable, apply silicon to each set screw to cover any exposed threads and fill-in the hole for the Allen wrench.

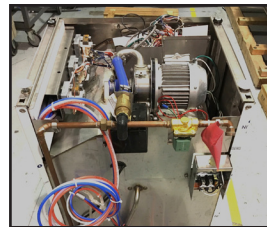


Only a small amount of silicon is necessary.

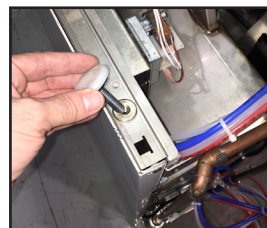
7. If the dishmachine was already installed, follow the Preparation section on page 1 and disconnect any hoses and wiring that might prevent flipping the machine over.
8. Place something on the floor that will prevent scratching the top of the dishmachine.
9. Flip the dishmachine over onto its top. Use mop or rags for any leaking water.



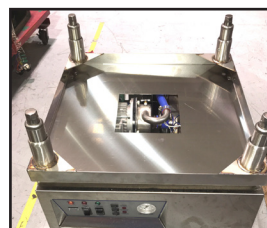
WARNING!
Never attempt to flip or lift the dishmachine alone. Seek help from other personnel or use an appropriate lifting device.



10. Remove the four feet from the dishmachine bottom.

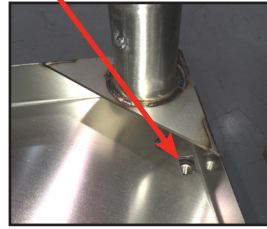


11. Set the stand upside-down on the bottom of the dishmachine, with the rectangular holes in the stand on the sides of the dishmachine.

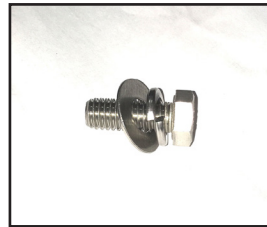


The stand will only mount to the dishmachine with the rectangular holes positioned on the sides of the dishmachine.

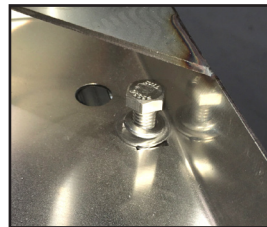
12. Line-up the rectangular holes in the stand with the feet holes on the dishmachine.



13. Assemble the four bolt and washer combinations provided with the kit. Put the lockwasher on the bolt first and then the flat washer.

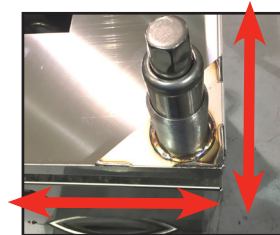


14. Start the four bolts with washers (only a few threads) through the rectangular holes in the stand and into the feet holes on the dishmachine.



Do not tighten bolts all the way down at this point!

15. Align the edges of the stand with the edges of the dishmachine.



16. Using a 9/16" wrench, tighten-down the four bolts.



Tighten bolts all the way down at this point.



WARNING!
Never attempt to flip or lift the dishmachine alone. Seek help from other personnel or use an appropriate lifting device.

17. Flip the dishmachine with stand over onto the feet of the stand.



18. Move the dishmachine to its operating location.
19. Verify the dishmachine is level before making utility connections. The dishmachine can be leveled by turning the adjustable feet on the stand.



CAUTION!
Ensure the dishmachine is level before operating.



20. After the dishmachine is installed and operational, run the dishmachine and ensure there is no excessive vibration or any other source of concern.
21. Keep the stand and underneath free of dirt, soil, and debris.