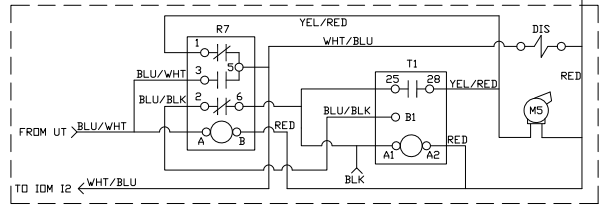
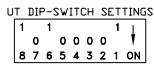
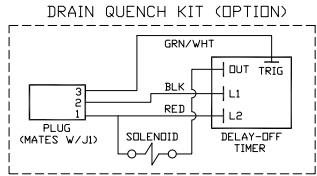
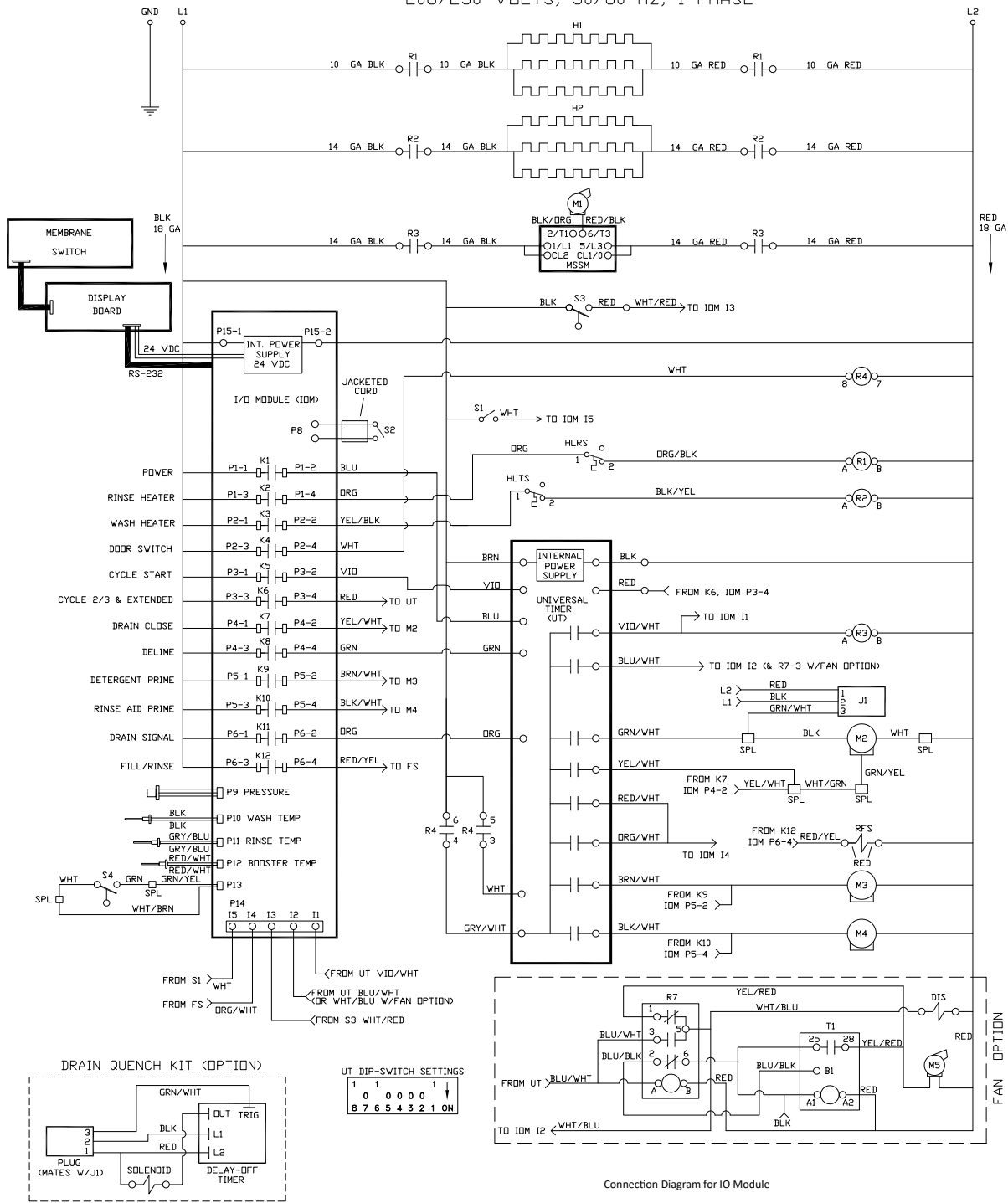


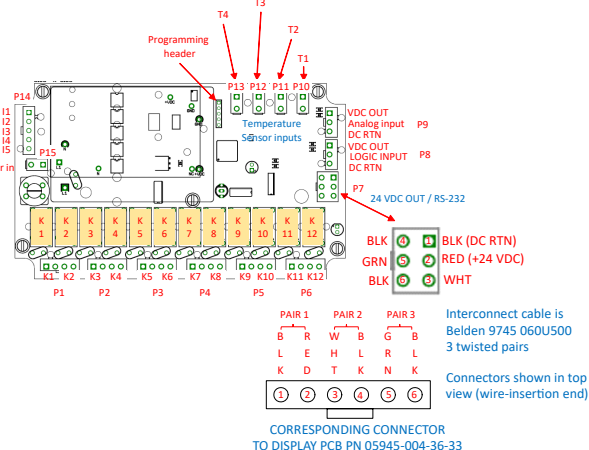
DELTA HT-E-SEER SCHEMATIC

208/230 VOLTS, 50/60 Hz, 1-PHASE



- LEGEND**
- L1 L2 L3 POWER DISTRIBUTION BLOCK
 - GND EARTH GROUND
 - H1 HEATER, RINSE
 - H2 HEATER, WASH
 - DIS DOOR INTERLOCK SOLENOID (OPTIONAL)
 - M1 MOTOR, WASH
 - M2 MOTOR, DRAIN VALVE
 - M3 MOTOR, DETERGENT
 - M4 MOTOR, RINSE AID
 - M5 MOTOR, FAN (OPTIONAL)
 - MSSM MOTOR, SDFT-START MODULE
 - R1 CONTACTOR, RINSE HEATER
 - R2 CONTACTOR, WASH HEATER
 - R3 CONTACTOR, WASH MOTOR
 - R4 RELAY, CONTROL
 - RS RELAY, FILL LATCH
 - R6 RELAY, DRAIN CONTROL
 - R7 FAN/INTERLOCK (OPTIONAL)
 - S1 SWITCH, DOOR
 - S2 SWITCH, CYCLE START
 - S3 FLOAT, HEATER CONTROL
 - S4 FLOAT, UPPER
 - T1 FAN/INTERLOCK TIMER (OPTIONAL)
 - HLTS HIGH LIMIT, WASH HEATER
 - HLRS HIGH LIMIT, RINSE HEATER
 - RFS SOLENOID, RINSE/FILL
 - J1 CONNECTOR, DRAIN QUENCH (OPTION)
 - SPLICE

- Input Assignments**
- I1 Wash
 - I2 Cycle
 - I3 Float
 - I4 Rinse
 - I5 Door/Chemicals
- Relay Assignments**
- K1 Power
 - K2 Booster heater
 - K3 Wash heater
 - K4 Varies by model
 - K5 Varies by model
 - K6 Varies by model
 - K7 Varies by model
 - K8 Varies by model
 - K9 Varies by model
 - K10 Varies by model
 - K11 Varies by model
 - K12 Varies by model



Interconnect cable is
Belden 9745 060U500
3 twisted pairs

Connectors shown in top view (wire-insertion end)

CORRESPONDING CONNECTOR TO DISPLAY PCB PN 05945-004-36-33

PAIR 1	PAIR 2	PAIR 3
B R W B	G B	
L E H L R L		
K D T K N K		